
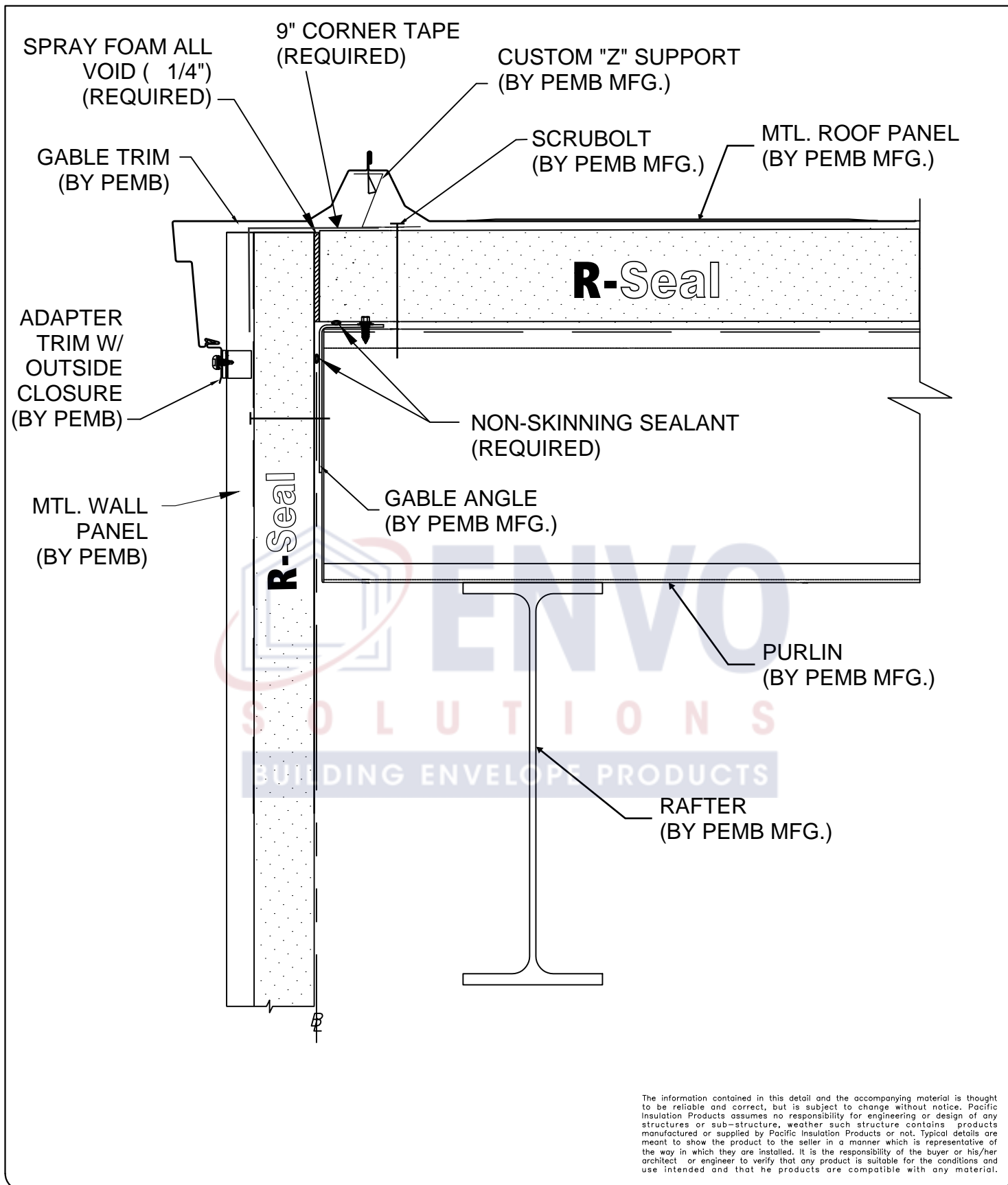

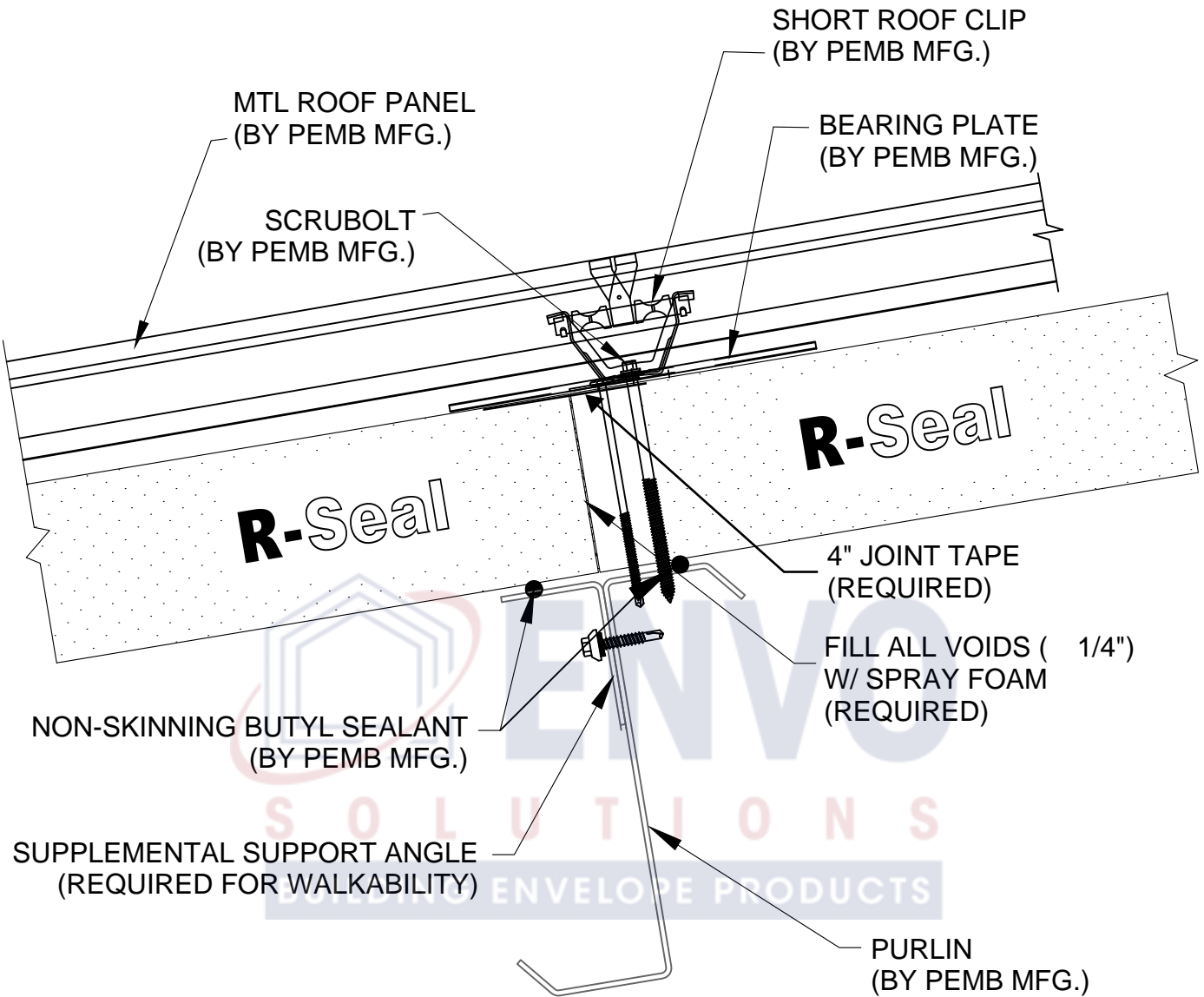


The information contained in this detail and the accompanying material is thought to be reliable and correct, but is subject to change without notice. Pacific Insulation Products assumes no responsibility for engineering or design of any structures or sub-structure, whether such structure contains products manufactured or supplied by Pacific Insulation Products or not. Typical details are meant to show the product to the seller in a manner which is representative of the way in which they are installed. It is the responsibility of the buyer or his/her architect or engineer to verify that any product is suitable for the conditions and use intended and that the products are compatible with any material.

ISSUE:	DWN:	CHK:	ENG:	MFG:	DATE:	<div>R-SEAL / BMC EAVE DETAIL - OPTION 1</div>		<div><div>PO BOX 586 HATFIELD, PA 19440 DETAILING@ENVOSOLUTIONS.COM</div></div>	PAGE: 1 OF 1
						STANDARD AIR BARRIER			



ISSUE:	DWN:	CHK:	ENG:	MFG:	DATE:	<i>R-SEAL / BMC RAKE DETAIL - OPT.#1</i>	 <div>PO BOX 586 HATFIELD, PA 19440 DETAILING@ENVOSOLUTIONS.COM</div>	PAGE: 1 OF 1
						STANDARD AIR BARRIER		



The information contained in this detail and the accompanying material is thought to be reliable and correct, but is subject to change without notice. Pacific Insulation Products assumes no responsibility for engineering or design of any structures or sub-structure, whether such structure contains products manufactured or supplied by Pacific Insulation Products or not. Typical details are meant to show the product to the seller in a manner which is representative of the way in which they are installed. It is the responsibility of the buyer or his/her architect or engineer to verify that any product is suitable for the conditions and use intended and that the products are compatible with any material.

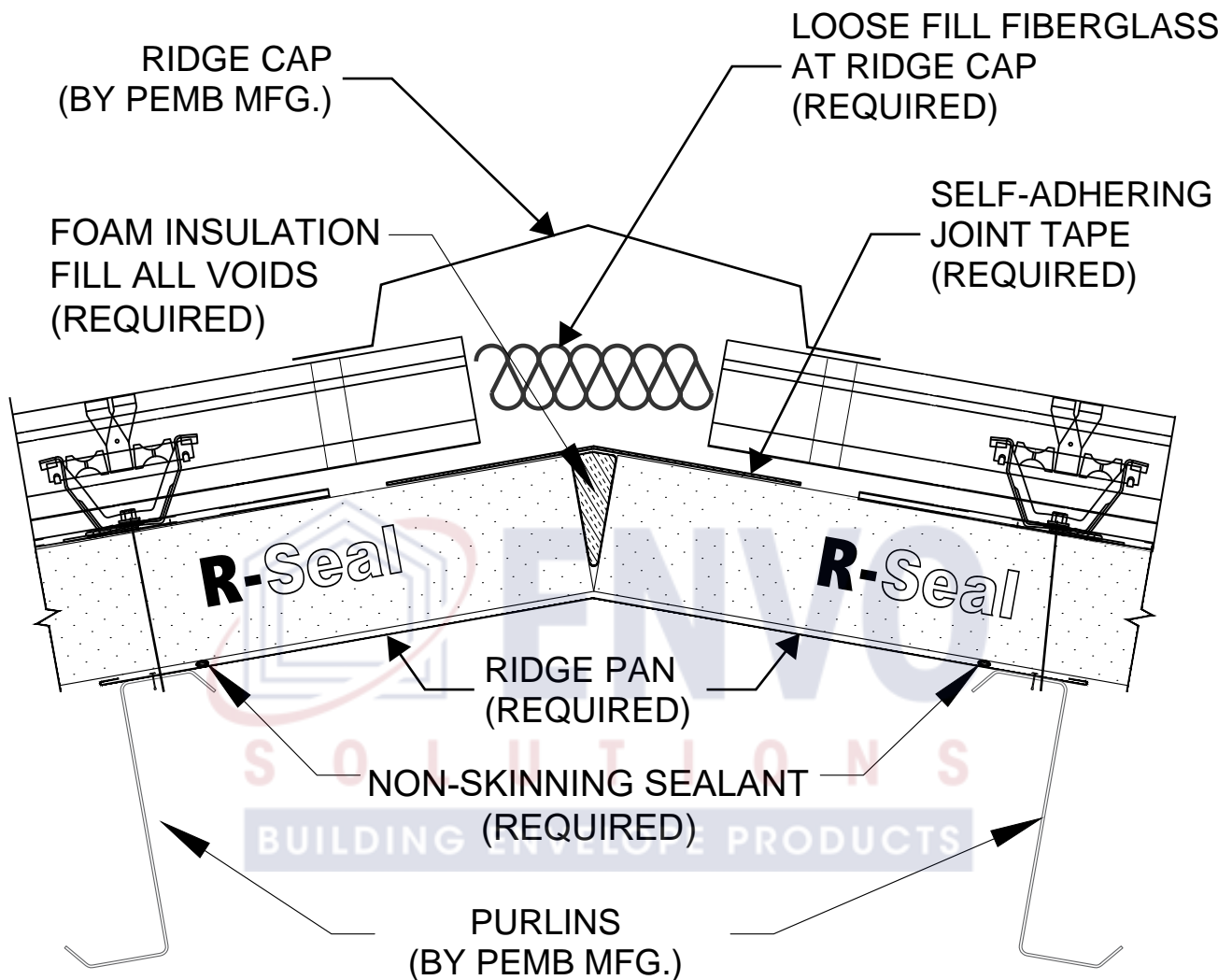
ISSUE:	DWN:	CHK:	ENG:	MFG:	DATE:

R-SEAL / BMC
ROOF JOINT DETAIL
OPTION #2


STANDARD AIR BARRIER

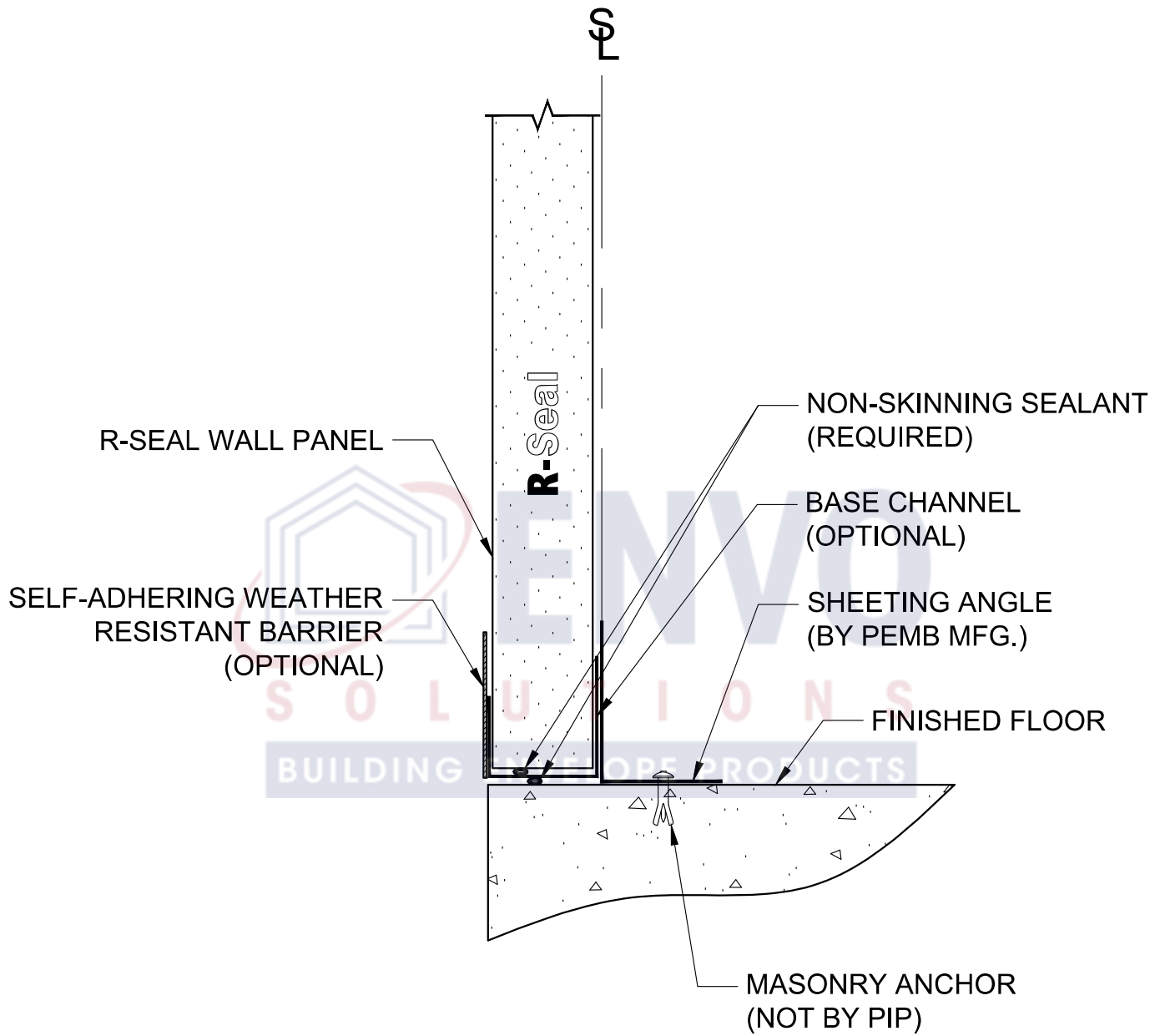


PO BOX 586
HATFIELD, PA 19440
DETAILING@ENVOSOLUTIONS.COM




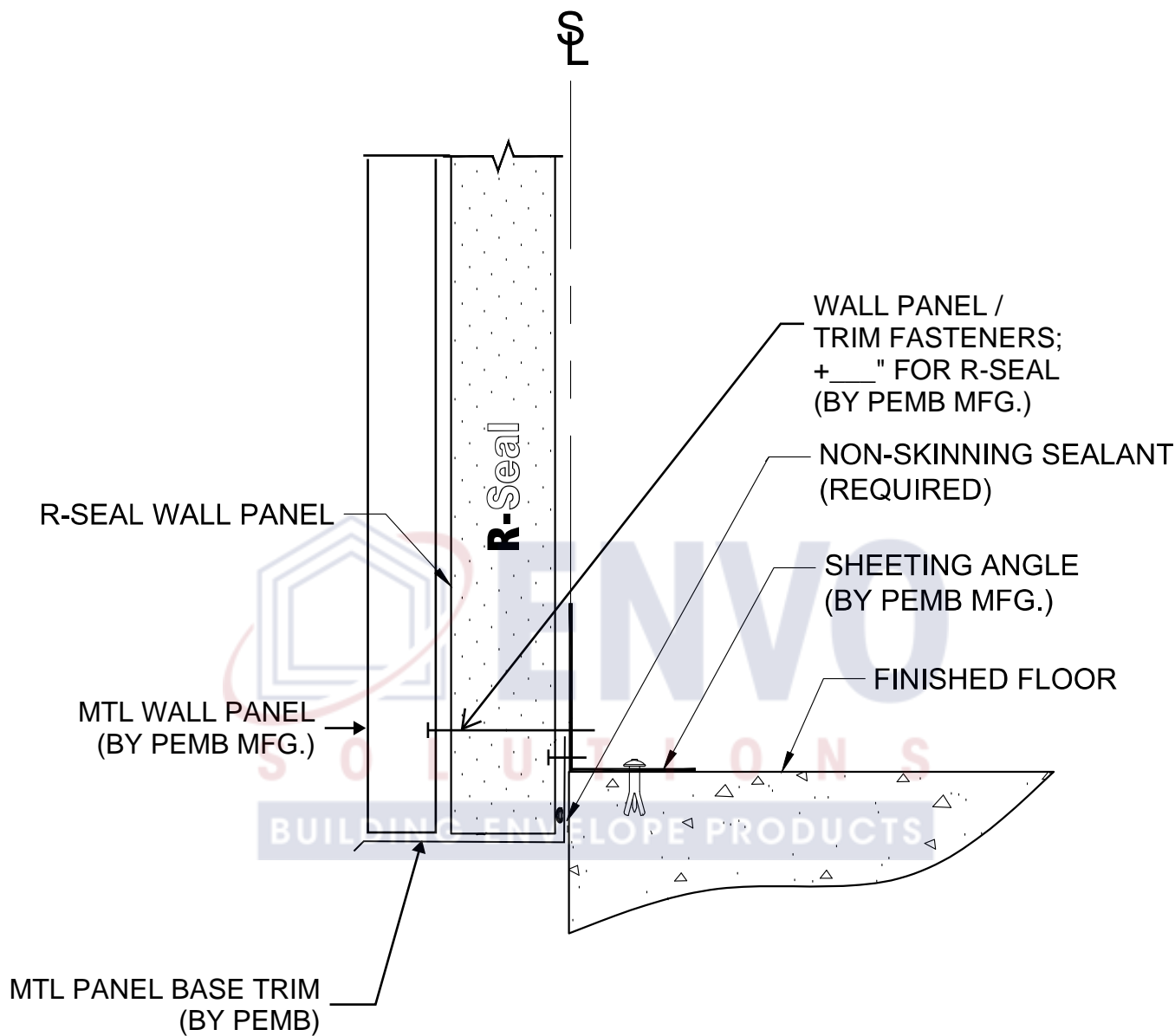
The information contained in this detail and the accompanying material is thought to be reliable and correct, but is subject to change without notice. Pacific Insulation Products assumes no responsibility for engineering or design of any structures or sub-structure, whether such structure contains products manufactured or supplied by Pacific Insulation Products or not. Typical details are meant to show the product to the seller in a manner which is representative of the way in which they are installed. It is the responsibility of the buyer or his/her architect or engineer to verify that any product is suitable for the conditions and use intended and that the products are compatible with any material.

ISSUE:	DWN:	CHK:	ENG:	MFG:	DATE:	<i>R-SEAL / BMC RIDGE DETAIL</i>	 <div>PO BOX 586 HATFIELD, PA 19440 DETAILING@ENVOSOLUTIONS.COM</div>	PAGE: 1 OF 1	
						<i>STANDARD AIR BARRIER</i>			



The information contained in this detail and the accompanying material is thought to be reliable and correct, but is subject to change without notice. Pacific Insulation Products assumes no responsibility for engineering or design of any structures or sub-structure, weather such structure contains products manufactured or supplied by Pacific Insulation Products or not. Typical details are meant to show the product to the seller in a manner which is representative of the way in which they are installed. It is the responsibility of the buyer or his/her architect or engineer to verify that any product is suitable for the conditions and use intended and that the products are compatible with any material.

ISSUE:	DWN:	CHK:	ENG:	MFG:	DATE:	<div>R-SEAL MBI FLUSH BASE DETAIL</div>		<div><div>PO BOX 586 HATFIELD, PA 19440 DETAILING@ENVOSOLUTIONS.COM</div></div>	PAGE: 1 OF 1
						STANDARD AIR BARRIER			



OPTION #1

The information contained in this detail and the accompanying material is thought to be reliable and correct, but is subject to change without notice. Pacific Insulation Products assumes no responsibility for engineering or design of any structures or sub-structure, whether such structure contains products manufactured or supplied by Pacific Insulation Products or not. Typical details are meant to show the product to the seller in a manner which is representative of the way in which they are installed. It is the responsibility of the buyer or his/her architect or engineer to verify that any product is suitable for the conditions and use intended and that the products are compatible with any material.

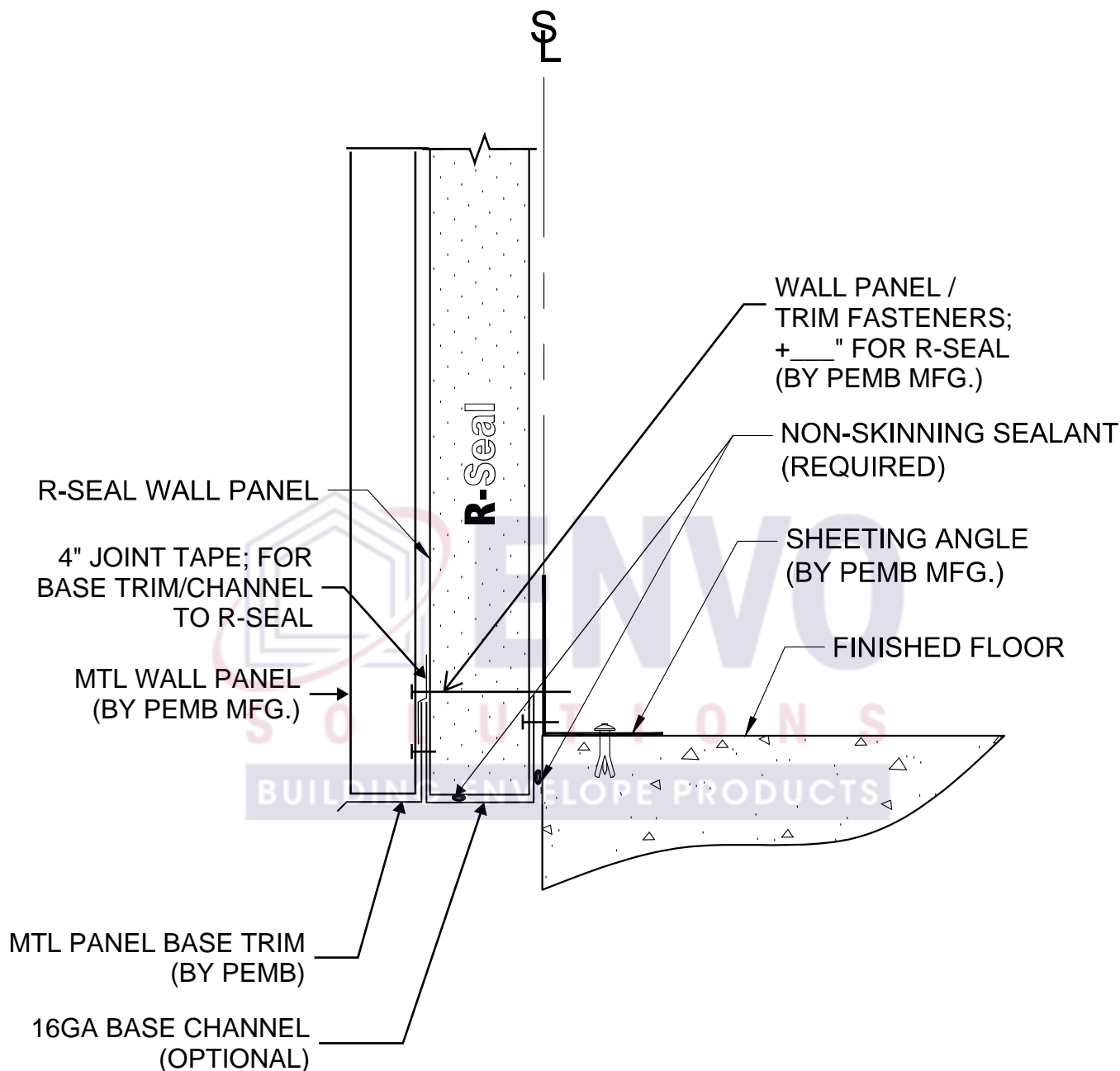
ISSUE:	DWN:	CHK:	ENG:	MFG:	DATE:

R-SEAL
MBI OFFSET BASE DETAIL

STANDARD AIR BARRIER



PO BOX 586
HATFIELD, PA 19440
DETAILING@ENVOSOLUTIONS.COM



OPTION #2

The information contained in this detail and the accompanying material is thought to be reliable and correct, but is subject to change without notice. Pacific Insulation Products assumes no responsibility for engineering or design of any structures or sub-structure, weather such structure contains products manufactured or supplied by Pacific Insulation Products or not. Typical details are meant to show the product to the seller in a manner which is representative of the way in which they are installed. It is the responsibility of the buyer or his/her architect or engineer to verify that any product is suitable for the conditions and use intended and that the products are compatible with any material.

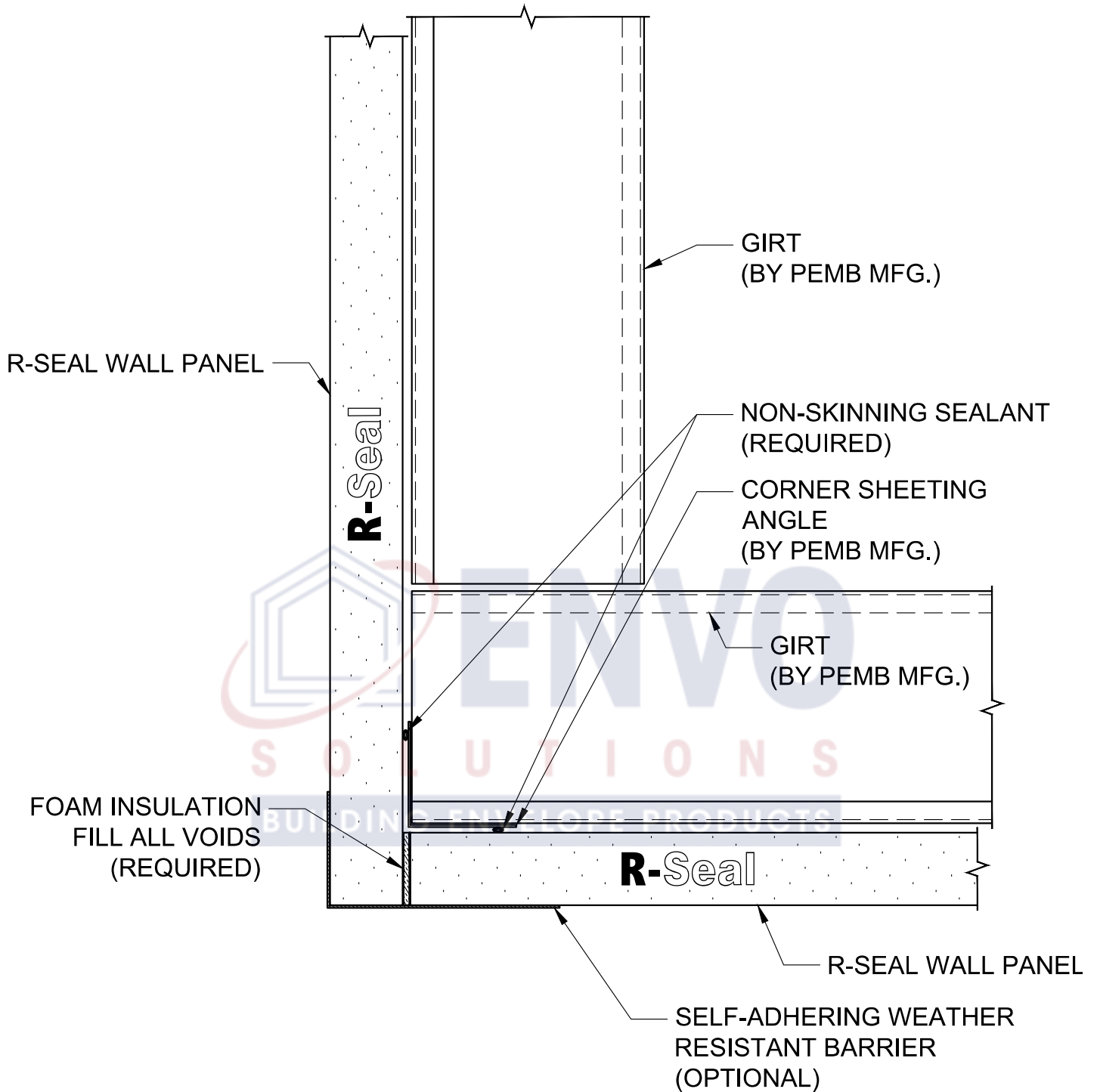
ISSUE:	DWN:	CHK:	ENG:	MFG:	DATE:

R-SEAL
MBI OFFSET BASE DETAIL


STANDARD AIR BARRIER

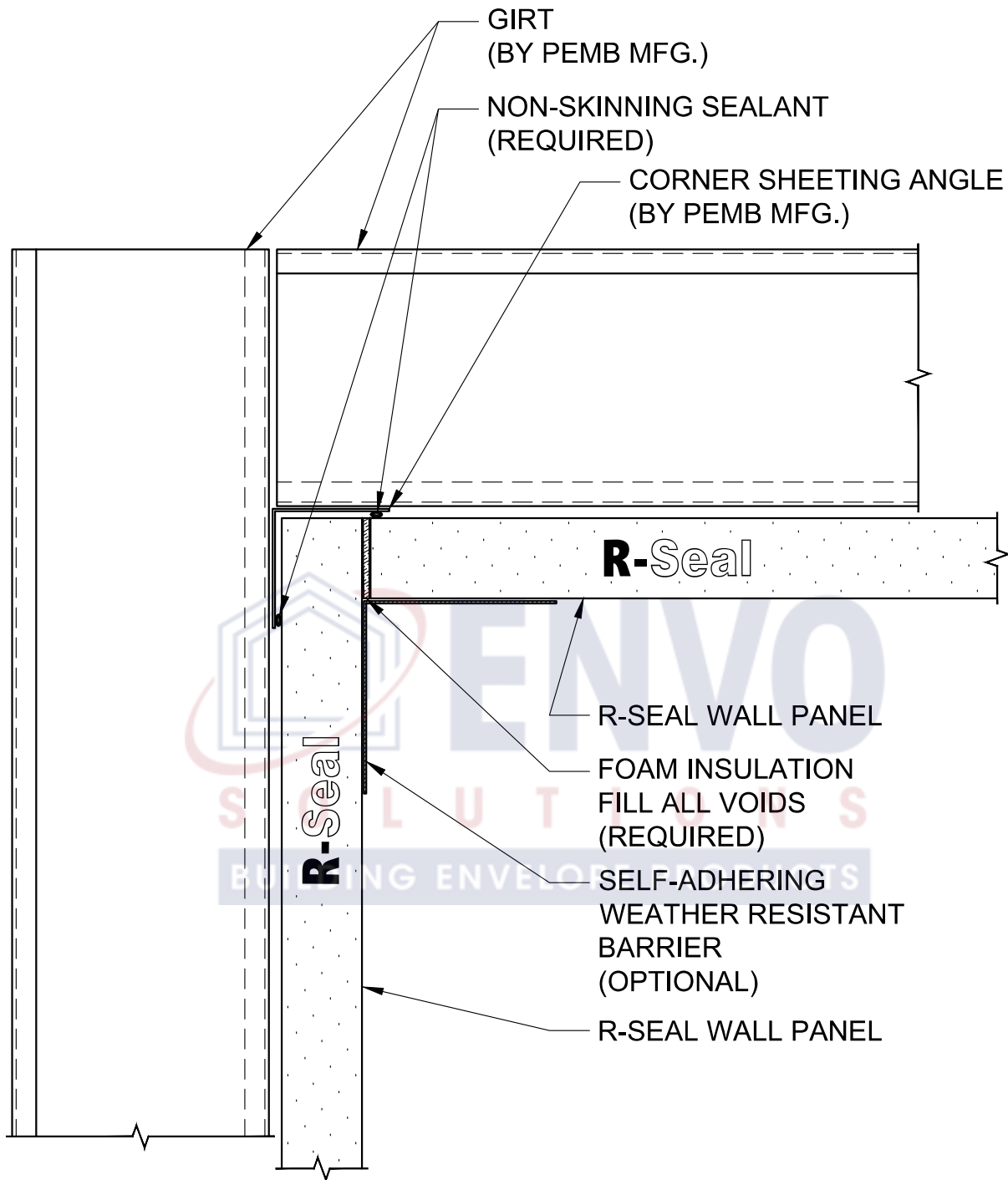


PO BOX 586
HATFIELD, PA 19440
DETAILING@ENVOSOLUTIONS.COM



The information contained in this detail and the accompanying material is thought to be reliable and correct, but is subject to change without notice. Pacific Insulation Products assumes no responsibility for engineering or design of any structures or sub-structure, whether such structure contains products manufactured or supplied by Pacific Insulation Products or not. Typical details are meant to show the product to the seller in a manner which is representative of the way in which they are installed. It is the responsibility of the buyer or his/her architect or engineer to verify that any product is suitable for the conditions and use intended and that the products are compatible with any material.

ISSUE:	DWN:	CHK:	ENG:	MFG:	DATE:	<div>R-SEAL MBI OUTSIDE CORNER DETAIL</div>	<div><div>PO BOX 586 HATFIELD, PA 19440 DETAILING@ENVOSOLUTIONS.COM</div></div>	<div>PAGE: 1 OF 1</div>
						<div>STANDARD AIR BARRIER</div>		



The information contained in this detail and the accompanying material is thought to be reliable and correct, but is subject to change without notice. Pacific Insulation Products assumes no responsibility for engineering or design of any structures or sub-structure, weather such structure contains products manufactured or supplied by Pacific Insulation Products or not. Typical details are meant to show the product to the seller in a manner which is representative of the way in which they are installed. It is the responsibility of the buyer or his/her architect or engineer to verify that any product is suitable for the conditions and use intended and that he products are compatible with any material.

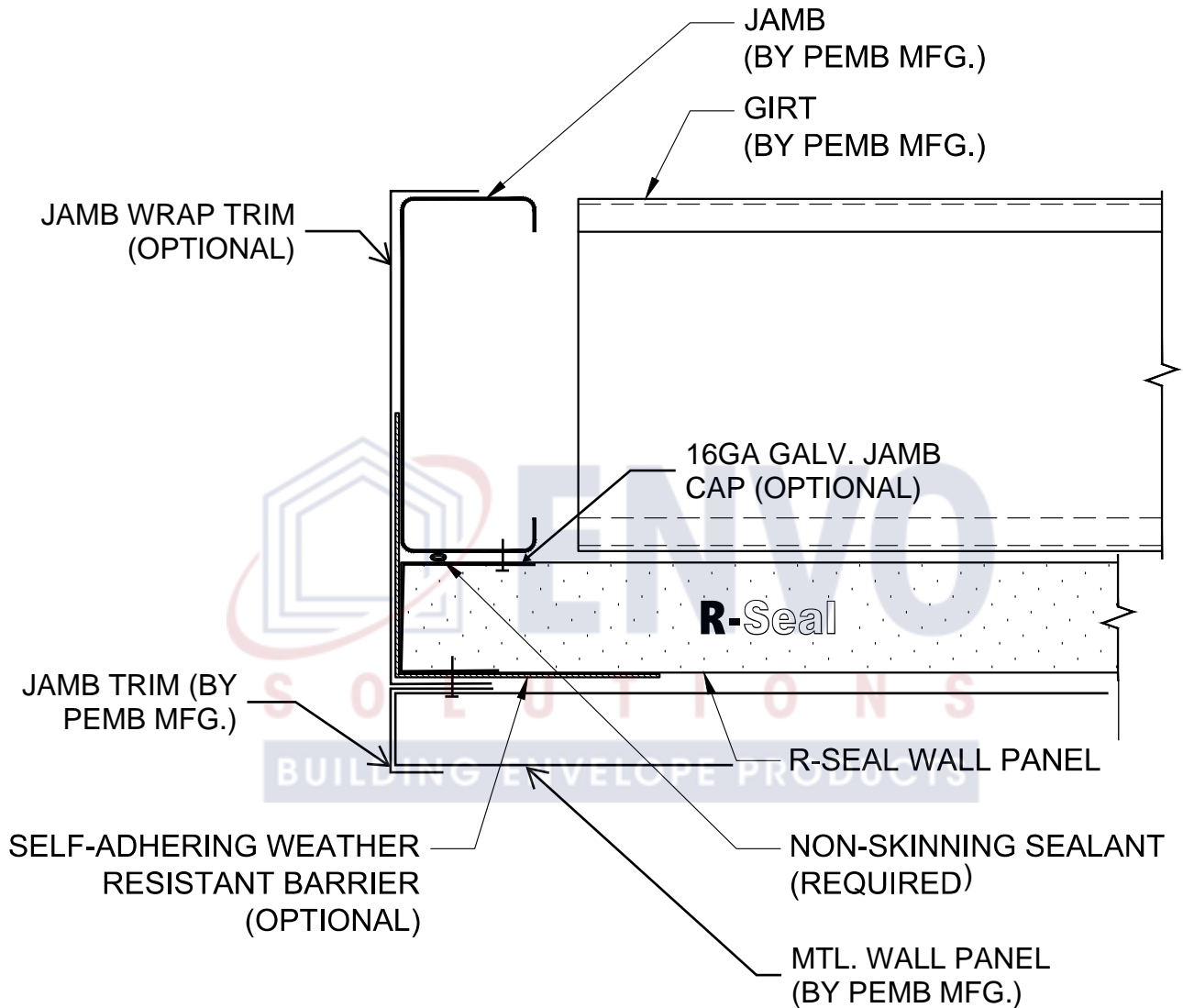
ISSUE:	DWN:	CHK:	ENG:	MFG:	DATE:

*R-SEAL
MBI INSIDE CORNER
DETAIL*

STANDARD AIR BARRIER



PO BOX 586
HATFIELD, PA 19440
DETAILING@ENVOSOLUTIONS.COM



The information contained in this detail and the accompanying material is thought to be reliable and correct, but is subject to change without notice. Pacific Insulation Products assumes no responsibility for engineering or design of any structures or sub-structure, whether such structure contains products manufactured or supplied by Pacific Insulation Products or not. Typical details are meant to show the product to the seller in a manner which is representative of the way in which they are installed. It is the responsibility of the buyer or his/her architect or engineer to verify that any product is suitable for the conditions and use intended and that the products are compatible with any material.

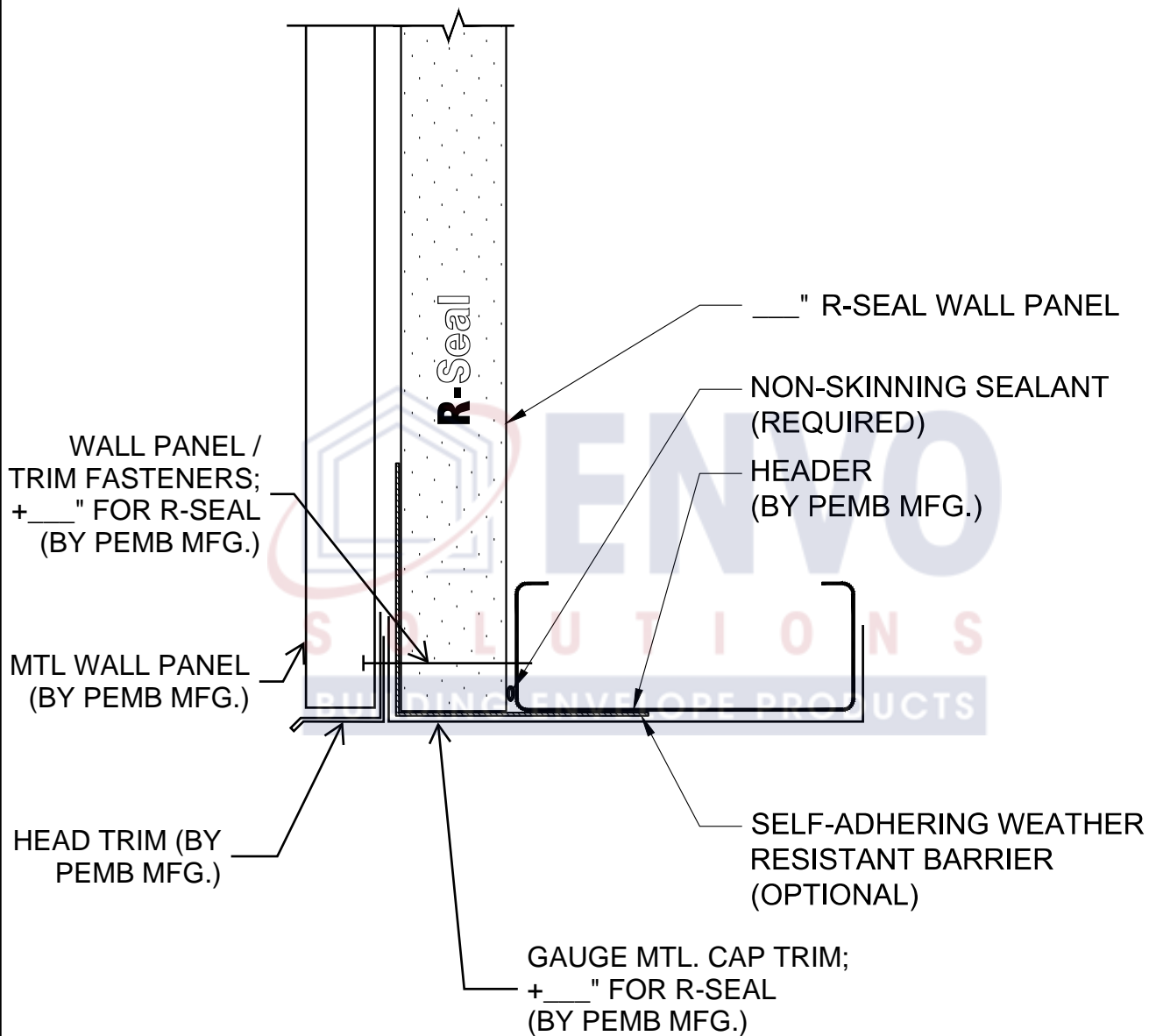
ISSUE:	DWN:	CHK:	ENG:	MFG:	DATE:

*R-SEAL
MBI JAMB DETAIL*


STANDARD AIR BARRIER

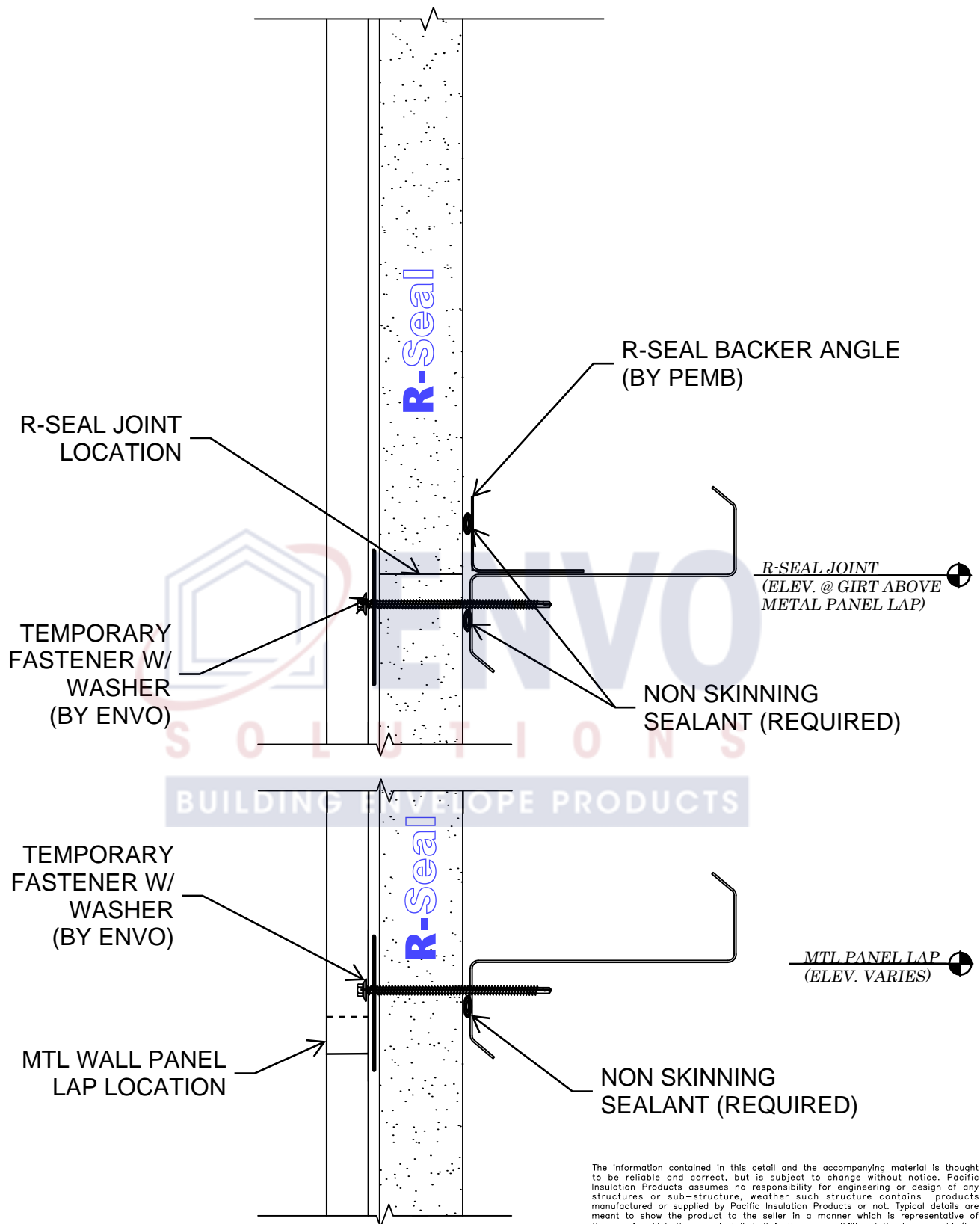



PO BOX 586
HATFIELD, PA 19440
DETAILING@ENVOSOLUTIONS.COM

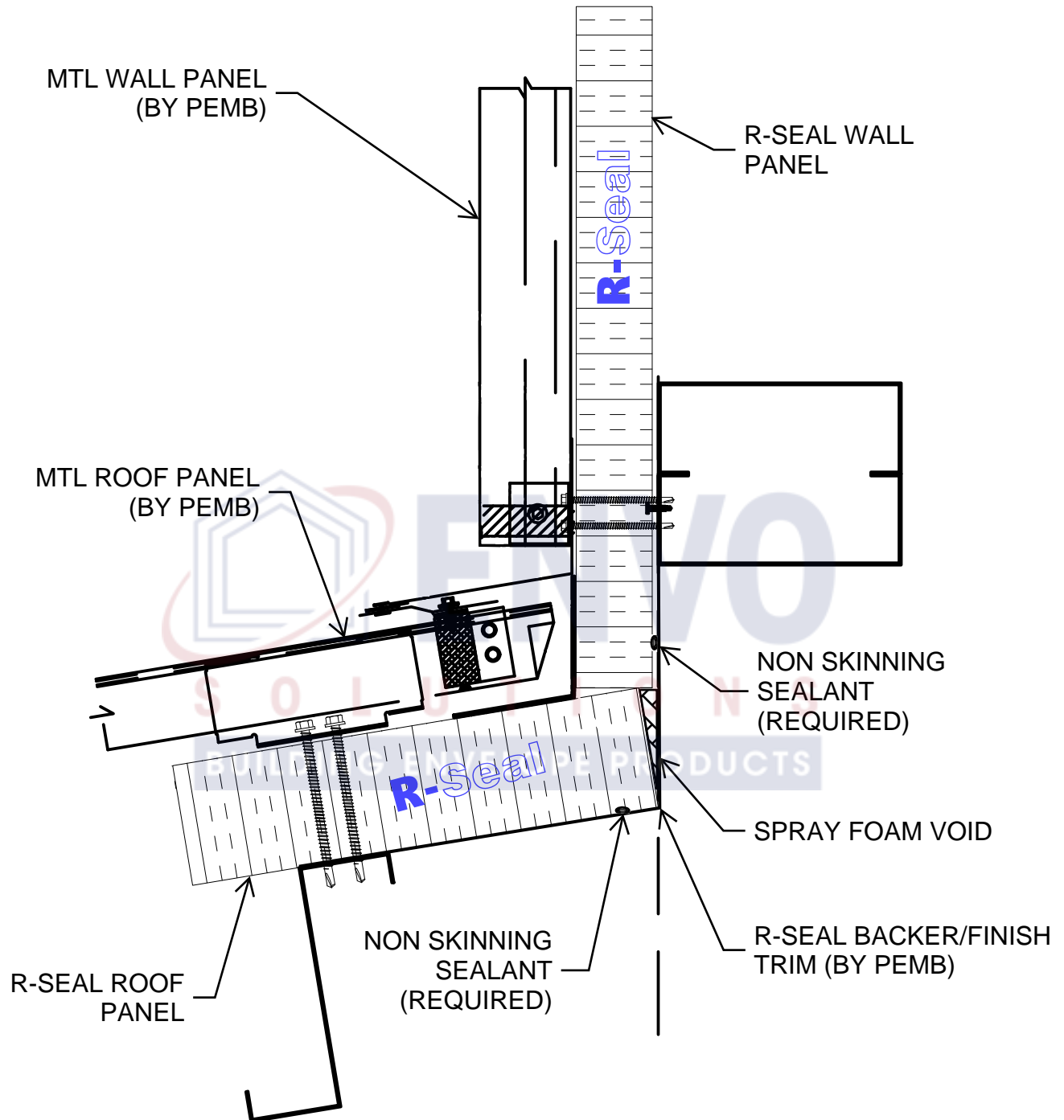


The information contained in this detail and the accompanying material is thought to be reliable and correct, but is subject to change without notice. Pacific Insulation Products assumes no responsibility for engineering or design of any structures or sub-structure, weather such structure contains products manufactured or supplied by Pacific Insulation Products or not. Typical details are meant to show the product to the seller in a manner which is representative of the way in which they are installed. It is the responsibility of the buyer or his/her architect or engineer to verify that any product is suitable for the conditions and use intended and that the products are compatible with any material.


ISSUE:	DWN:	CHK:	ENG:	MFG:	DATE:	<div>R-SEAL MBI HEADER DETAIL</div>	<div><div>PO BOX 586 HATFIELD, PA 19440 DETAILING@ENVOSOLUTIONS.COM</div></div>	PAGE: 1 OF 1
						<div>STANDARD AIR BARRIER</div>		



ISSUE:	DWN:	CHK:	ENG:	MFG:	DATE:	R-SEAL BUTT JOINT SIDEWALL W/ANGLE	 <div>PO BOX 586 HATFIELD, PA 19440 DETAILING@ENVOSOLUTIONS.COM</div>	PAGE: 1 OF 1	
						STANDARD AIR BARRIER			



The information contained in this detail and the accompanying material is thought to be reliable and correct, but is subject to change without notice. Pacific Insulation Products assumes no responsibility for engineering or design of any structures or sub-structure, whether such structure contains products manufactured or supplied by Pacific Insulation Products or not. Typical details are meant to show the product to the seller in a manner which is representative of the way in which they are installed. It is the responsibility of the buyer or his/her architect or engineer to verify that any product is suitable for the conditions and use intended and that the products are compatible with any material.

ISSUE:	DWN:	CHK:	ENG:	MFG:	DATE:	<i>R-SEAL</i> <i>WALL TO ROOF TRANSITION DETAIL</i>		 PO BOX 586 HATFIELD, PA 19440 DETAILING@ENVOSOLUTIONS.COM	PAGE: 1 OF 1
						<i>STANDARD AIR BARRIER</i>			